



N. 590829/1

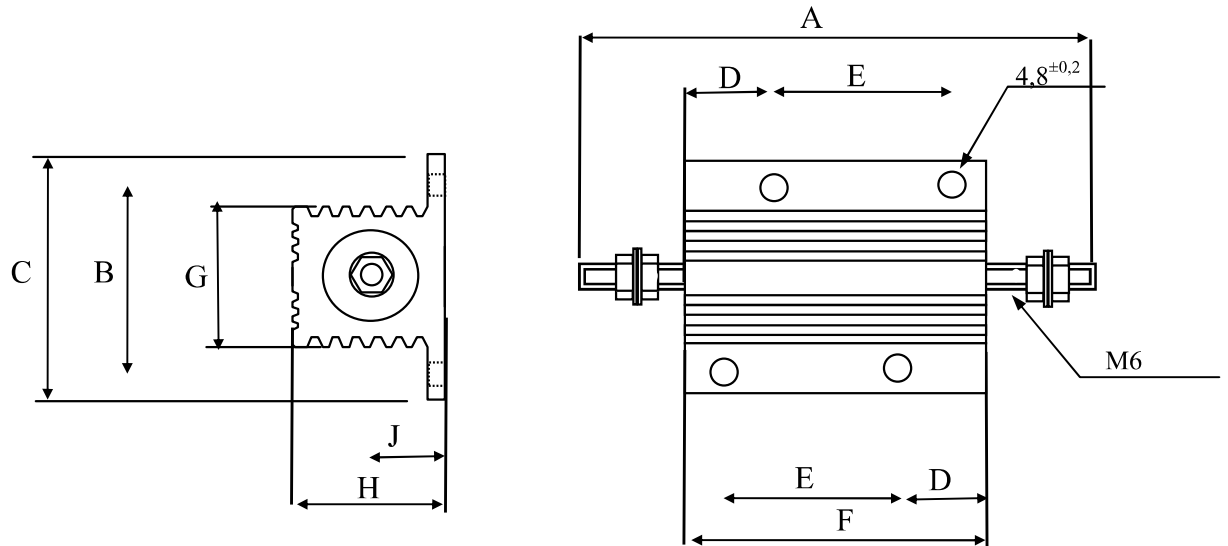
foglio 1 di 2

DATA SHEET

Approval Walter Cerutti
Verified Mauro Pellegatta
Revision 1 14/12/04

Emission DT 27/10/03

ALUMINIUM HOUSED POWER WIREWOUND RESISTORS STYLE RHS250



DIMENSIONS

STYLE	A±2	B±0,2	C±0,5	D±0,2	E±0,2	F±0,5	G±0,5	H±0,2	J±0,2	weight
RHS 250	178	63,5	76	30	76,2	114	54	55,6	25,5	900g

1. FEATURES

The style RHS250 is a range of high quality, high stability aluminium housed power wirewound resistors designed for direct heat sink attachment. These resistors must be mounted on standard heat sink or on similar heat sink of correct thermal resistance for the power being dissipated. This style represent the completion of the series of resistors illustrate in the Data Sheet 590820

2. ELECTRICAL CHARACTERISTICS

SIR STYLE	RHS 250
Power rating (mounted on standard heat sink)	250 W
Standard heat sink (thickness mm 3)	4765 cm ²
Power rating (without heat sink)	100 W
Resistance range	0,1 Ω 51 kΩ
Resistance tolerance	Standard ± 5% - Also available ±1%, ±2%, ±3%
Max working voltage	2200 V
Coefficient of temperature ppm/°C	Above 2 kΩ = 30 ppm/°C Within 2 k Ω = 50ppm/°C
Isolation resistance @ 1000 Vdc	≥ 10.000 MΩ
Dielectric strength @ 50 Hz for 1min.	4500 Vrms

S.I.R. Società Italiana Resistor
I 21053 Castellanza - Via Isonzo 13
Tel.0331.504.828 - Fax 0331.504.565





N. 590829/1

DATA SHEET

Approval Walter Cerutti
Verified Mauro Pellegatta
Revision 1 14/12/04

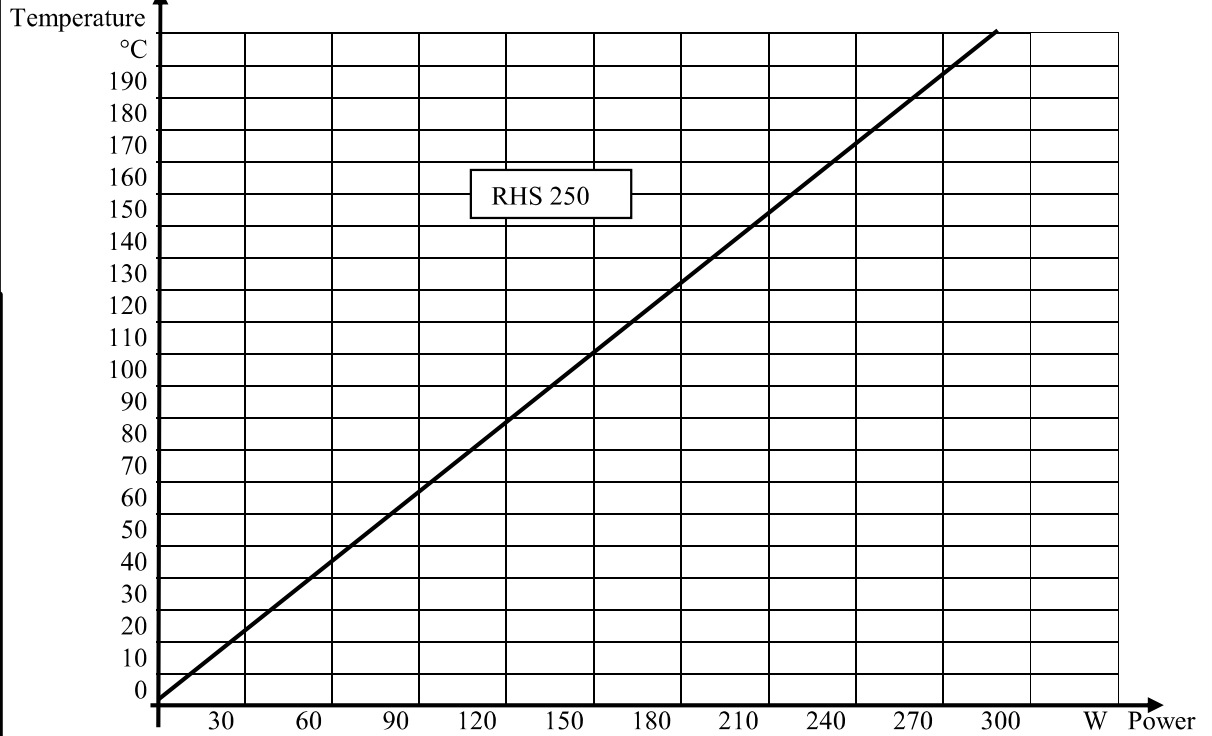
foglio 2 di 2

Emission DT 27/10/03

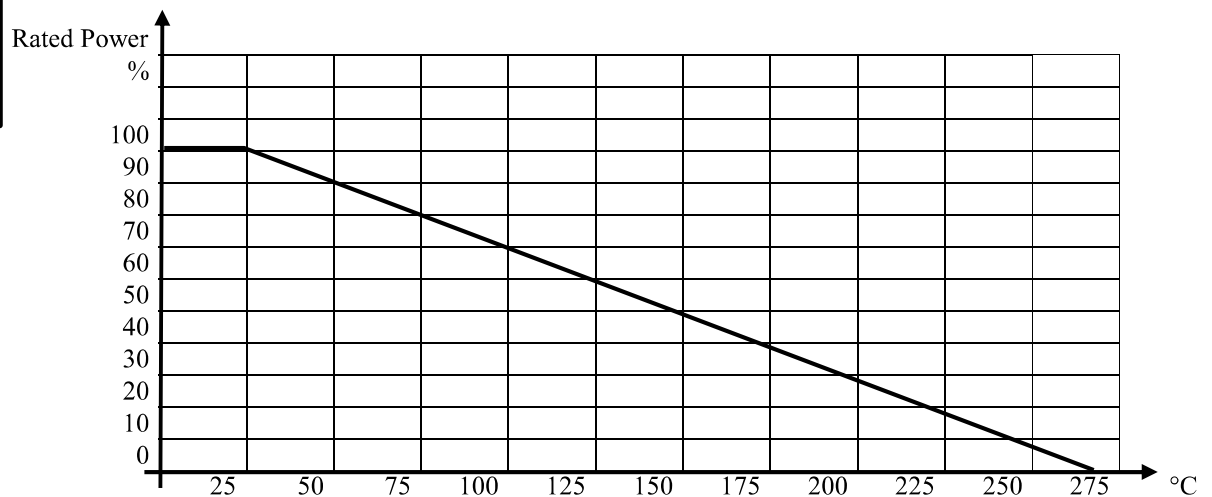
ALUMINIUM HOUSED POWER WIREWOUND RESISTORS RHS250

3. Surface temperature of resistor related to power dissipation

The resistor is standard heat sink mounted using a suitable heat sink compound



4. Power rating related to ambient temperature



S.I.R. Società Italiana Resistor
I 21053 Castellanza - Via Isonzo 13
Tel.0331.504.828 - Fax 0331.504.565





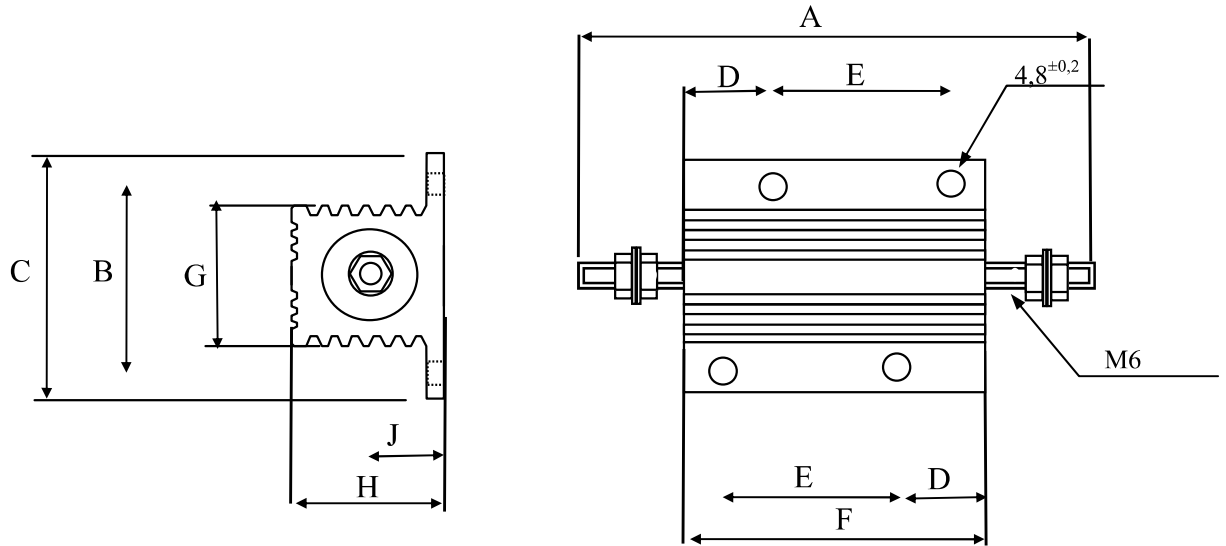
N. 590829/2

foglio 1 di 2

DATA SHEET

Approval Walter Cerutti
Verified Mauro Pellegatta
Revision 1 14/12/04

Emission DT 16/11/99

NON INDUCTIVE ALUMINIUM HOUSED POWER WIREWOUND
RESISTORS STYLE RHSN250 –

DIMENSIONS

STYLE	A±2	B±0,2	C±0,5	D±0,2	E±0,2	F±0,5	G±0,5	H±0,2	J±0,2	weight
RHS 250	178	63,5	76	30	76,2	114	54	55,6	25,5	900g

5. FEATURES

The style RHSN250 is a range of high quality, high stability aluminium housed power wirewound resistors designed for direct heat sink attachment. These resistors must be mounted on standard heat sink or on similar heat sink of correct thermal resistance for the power being dissipated. This style represent the completion of the series of resistors illustrate in the Data Sheet 590820

6. ELECTRICAL CHARACTERISTICS

SIR STYLE	RHSN 250
Power rating (mounted on standard heat sink)	250 W
Standard heat sink (thickness mm 3)	4765 cm ²
Power rating (without heat sink)	100 W
Resistance range	0,1 Ω 33 kΩ
Resistance tolerance	Standard ± 5% - Also available ±1%, ±2%, ±3%
Max working voltage	1500 V
Coefficient of temperature ppm/°C	Above 2 kΩ = 30 ppm/°C Within 2 kΩ = 50ppm/°C
Isolation resistance @ 1000 Vdc	≥ 10.000 MΩ
Dielectric strength @ 50 Hz for 1min.	4500 Vrms

S.I.R. Società Italiana Resistor
I 21053 Castellanza - Via Isonzo 13
Tel.0331.504.828 - Fax 0331.504.565





N. 590829/2

DATA SHEET

Approval Walter Cerutti
Verified Mauro Pellegatta
Revision 1 14/12/04

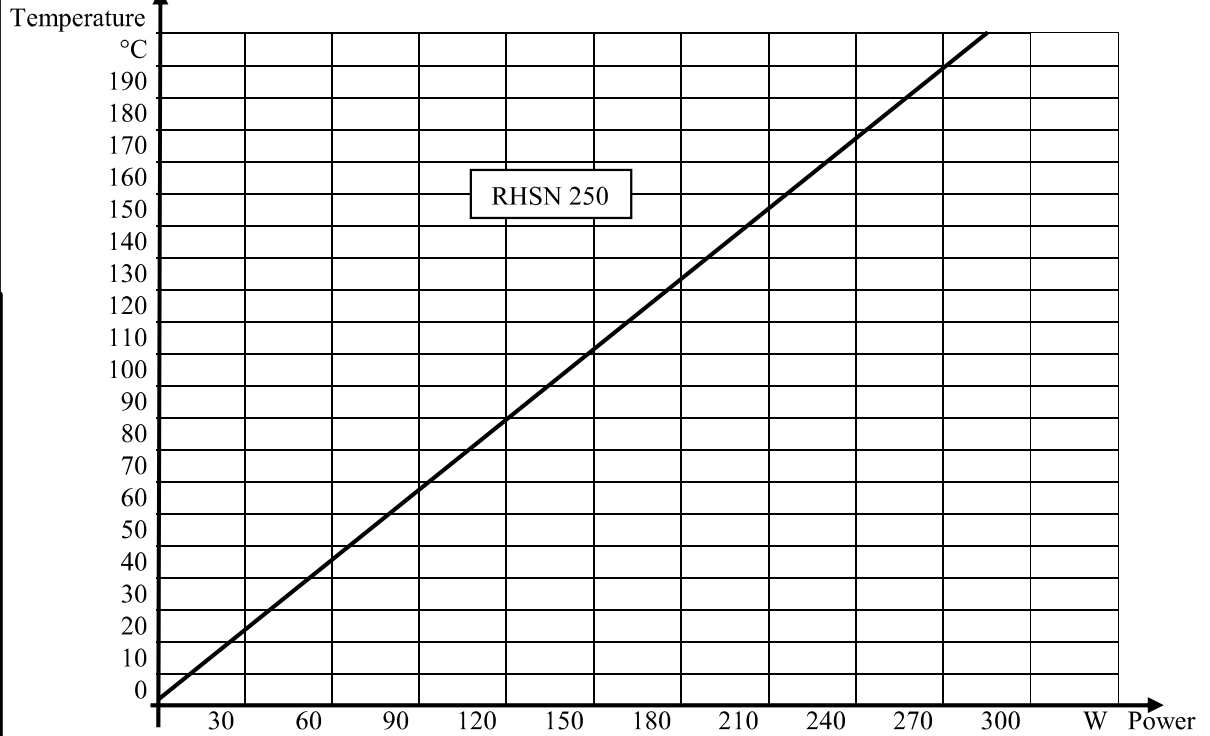
foglio 2 di 2

Emission DT 16/11/99

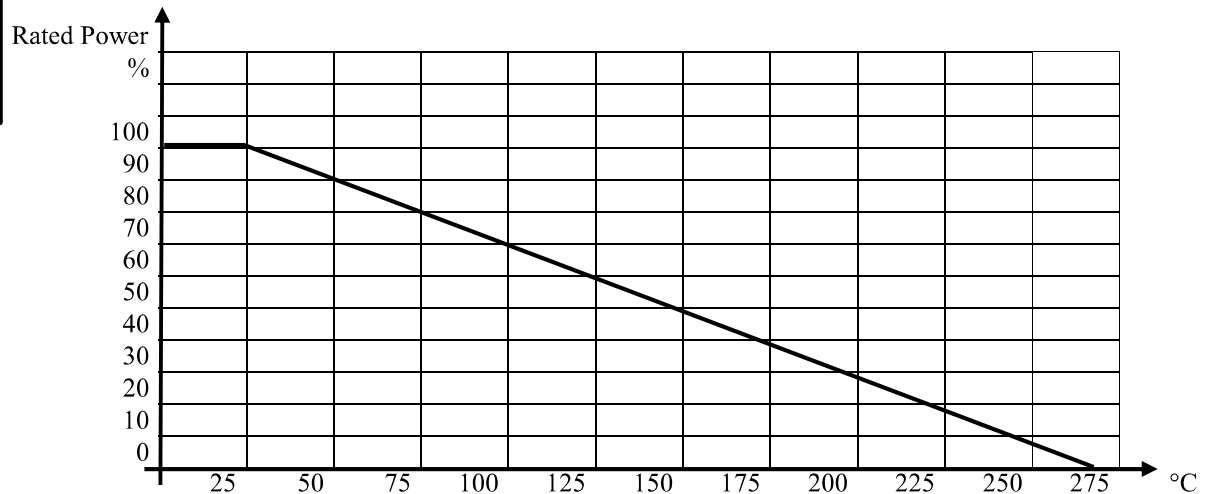
ALUMINIUM HOUSED POWER WIREWOUND RESISTORS RHSN250

7. Surface temperature of resistor related to power dissipation

The resistor is standard heat sink mounted using a suitable heat sink compound



8. Power rating related to ambient temperature



S.I.R. Società Italiana Resistor
I 21053 Castellanza - Via Isonzo 13
Tel.0331.504.828 - Fax 0331.504.565

