



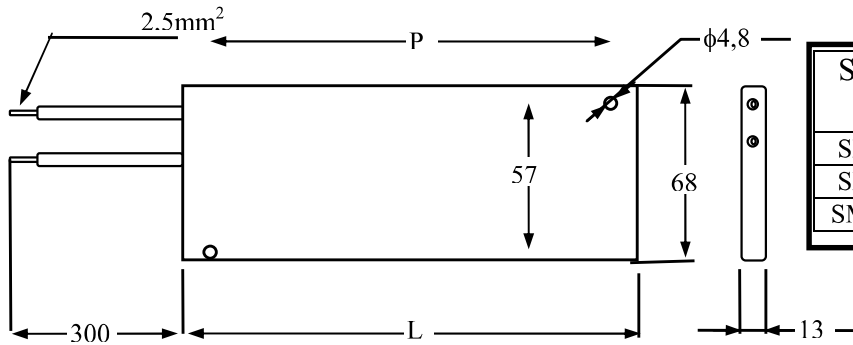
N. 590360

page 1 of 1

DATA SHEET

Approval Walter Cerutti
Verified Mauro Pellegatta
Revision 1 15/10/01
Emission DT 01.09.1996

ZINC PLATED STEEL HOUSED POWER WIREWOUND RESISTORS STYLE SMF 600 SMF 900 SMF 1300



STYLE	L	P	POWER *W
SMF 600	102	81	550
SMF 900	145	124	850
SMF 1300	195	174	1250

*On heat sink

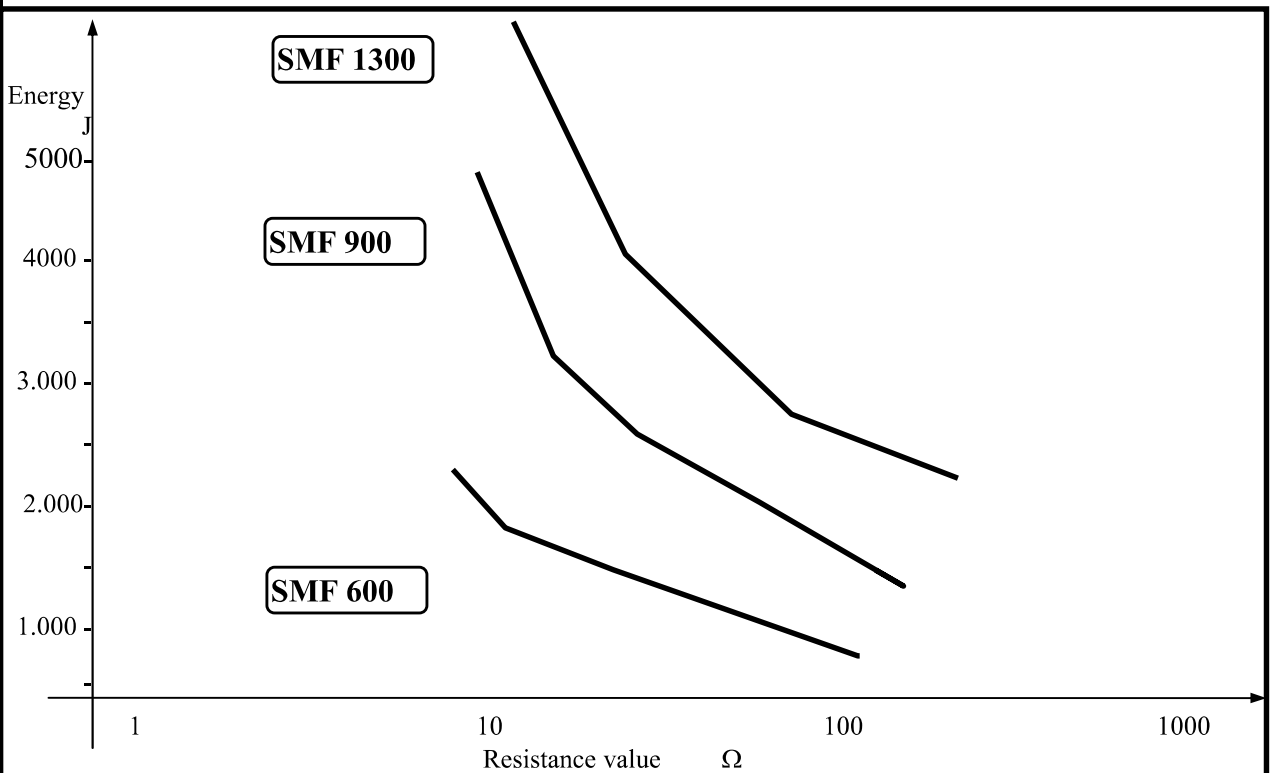
1. FEATURES

The SMF resistors are a cheaper version of the style SRF shown in the Data Sheet 590390. They have a lower resistance range, but maintain the same characteristics of the basis resistors.

2. ELECTRICAL SPECIFICATIONS

Characteristics	SMF 600	SMF 900	SMF 1300
Power rating (with 0,5°C/W heat sink)	550 W	850 W	1250 W
Temperature rise @ Pr	390°C	390°C	390°C
Max. power without heat sink	250 W	400 W	550 W
Resistance range	10 82 Ω	12 100 Ω	15 150 Ω
Resistance tolerance	±5%	±5%	±5%
Max. working voltage	1.500 V	1.500 V	1.500 V
Isolation resistance @ 1000 VDC	≥500 MΩ	≥500 MΩ	≥500 MΩ
Dielectric strength @ 50 Hz for 1'	2.500 Vrms	2.500 Vrms	2.500 Vrms
Thermal time constant	10'	10'	10'

3. Max. adiabatic impulse in relation to the resistance value



S.I.R. Società Italiana Resistor
I 21053 Castellanza - Via Isonzo 13
Tel.0331.504.828 - Fax 0331.504.565

